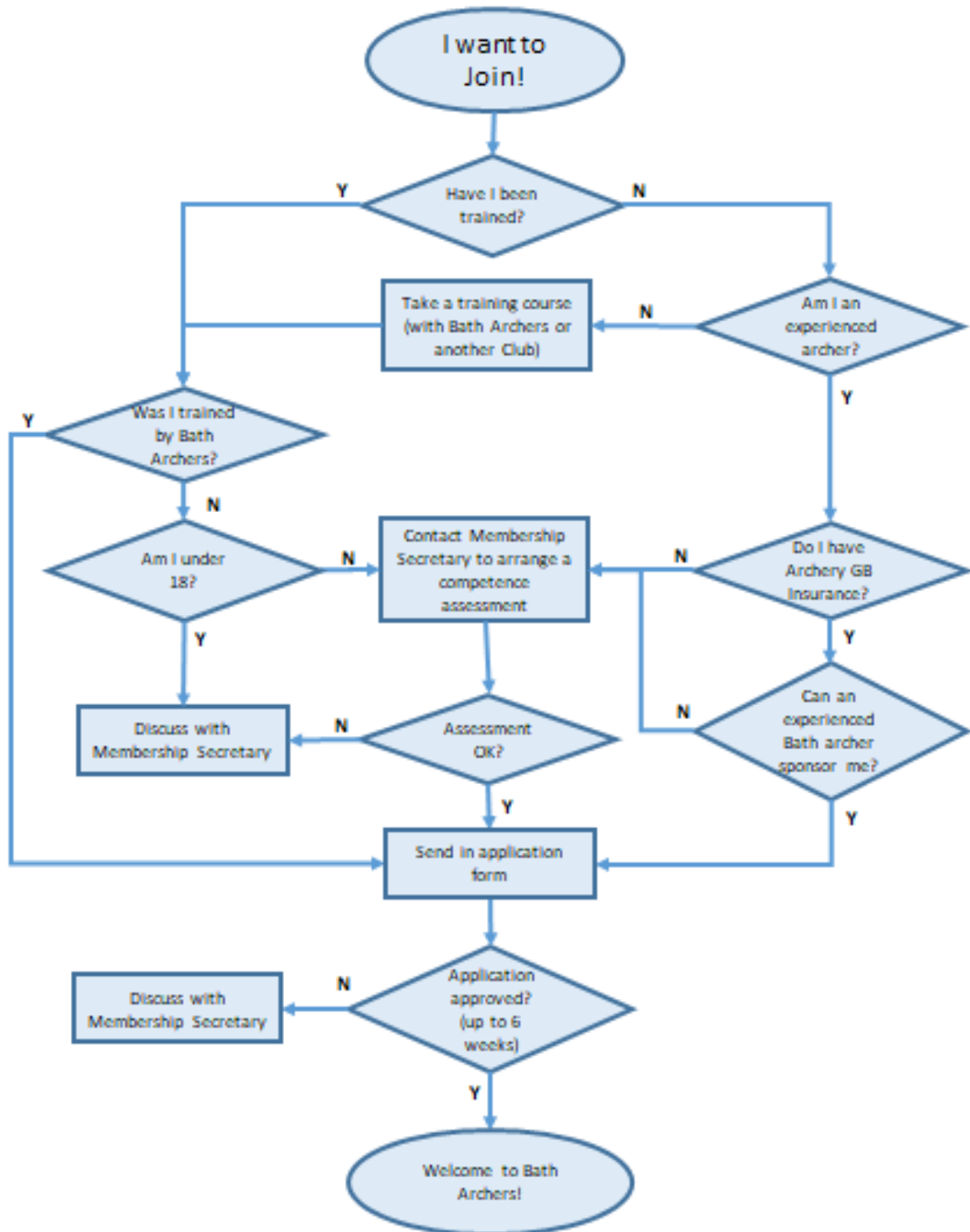


# Joining Bath Archers – How it Works

(version 3.4)



## General Requirements To Be a Member of Bath Archers

1. Have been trained in the sport, or have experience in lieu of training.
2. Have a working knowledge of the Archery GB Rules of Shooting.
3. Have your own equipment which conforms to the Archery GB Rules of Shooting (see below for Bath trained archers).
4. Be assessed as safe to shoot by an experienced Bath Archer (this may be waived if an experienced Bath Archer can vouch for your competence or you have been trained by us).
5. Apply for membership and pay the relevant rate of subscription, including Archery GB, GWAS, and SCAA affiliations as necessary.
6. Be approved by the Committee (this can take up to 6 weeks, however you may be allowed to shoot with us whilst waiting for approval). See below - *Approval*.
7. Meet some additional requirements if you are a Junior Archer (under 18). See below – *Special Requirements for Junior Archers*.

## Joining

### As an Experienced Archer.

By this we mean that you have regularly shot as part of a club or at organised shoots in the UK or elsewhere.

- You will need to meet the general requirements above.
- If you are sponsored by a current Bath Archers member, please contact the Membership Secretary who will send you the application form (also on the Bath Archers website).
- If you are an experienced archer but are unknown to us, please contact the Membership Secretary who will arrange a competence assessment by an experienced club archer. If your membership of Archery GB has lapsed, you will need to confirm that you want to re-join the sport as you will then be covered by our insurance.
- If your assessment is successful the Membership Secretary will send you an application form.
- PLEASE NOTE: Once accepted you may only shoot in the discipline (target or field) in which you have been accepted into the club until we have familiarised you with shooting in the other discipline and confirmed that you are safe to shoot.

### As a New Archer (adult or junior).

By this we mean that you have limited or no experience of shooting a bow.

- You will need to take a course (provided by us, a training provider, or another club) or gain experience in some other way before you can apply for membership.
- You will need to meet the general requirements above, with the exception of point 3 in that archers trained by us may use our shooting equipment for a period of up to 2 months. If you would like to take lessons with us, please apply using the Lessons contact on our website. If you are unsure whether you would like the sport you may want to take a Taster session with us first; for details please use the Tasters contact on our website.
- Once you have successfully completed a course with us, how to join will be explained and the forms will be provided.

- If you have not been trained by us you will need to be assessed by an experienced club archer before applying for membership (you will be covered by our insurance when this takes place). Please contact the Membership Secretary to arrange this.
- If your assessment is successful the Membership Secretary will send you an application form.
- PLEASE NOTE: Once accepted, you may only shoot in the discipline (target or field) in which you have been trained and accepted into the club until we have familiarised you with shooting in the other discipline and confirmed that you are safe to shoot.

### Special Requirements for Junior Archers

As mentioned above, there are extra requirements for Junior Archers (under the age of 18).

As a Junior Archer you cannot shoot with us without the presence of an adult guardian, and an experienced archer must be in control of shooting (can be the guardian) when you shoot. This places some extra requirements which must be discussed with the Membership Secretary before an application is submitted.

For young archers with little experience at this time Bath Archers is unable to provide further training, so the Junior Archer must be supervised by a *competent* archer when shooting (see below) at the field AND a guardian must be present (this could be the competent archer).

Bath Archers will nominate an experienced archer or archers who can provide advice and guidance for the guardian and young archer, on request.

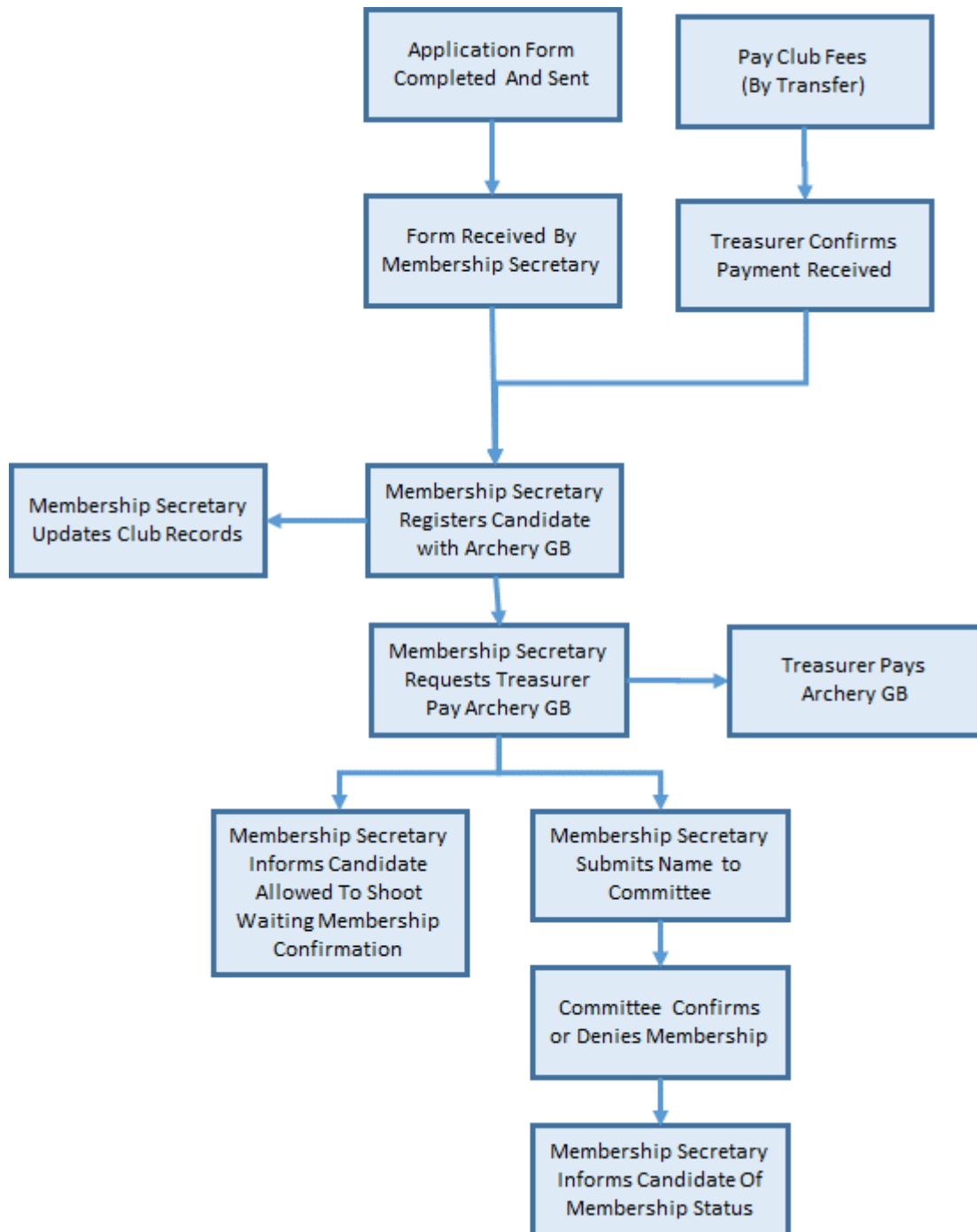
The best option is if the guardian of the young archer is also the competent archer providing the supervision.

For the purposes of supervising a Junior Archer:

- A guardian is a parent, close family relative or legal guardian of the young archer - another archer or Bath Archers member cannot be nominated as a guardian.
- A *competent* archer is one who has been trained and has been assessed as competent to supervise by an experienced member of the club.

## What happens to your application

Once you have submitted your application, the Membership Secretary will process it as shown below.



## Approval

With due and careful regard to UK discrimination law the Committee have to be sure that anyone who joins Bath Archers is safe to shoot and will not adversely affect the club or our sport.

For this reason the applications of all prospective members are discussed by the Committee who will take into consideration any views expressed by club members based upon their direct knowledge of the prospective member.

The committee will normally accept the application immediately if the applicant:

- Has been trained by us.
- Is well known to us and sponsored by a full member of the club (for example someone joining us from another local club).
- Has been assessed as competent before the application has been submitted. This involves demonstrating that you understand the Rules of Shooting (especially range safety) and that you shoot in a way that will not harm you or others.

On some *very* rare occasions club members may have knowledge that calls into question the ability of a prospective member to shoot safely or to behave in a way that does not put at risk the club or its members.

In these cases the committee may decide to discuss any concerns with the prospective member and/or investigate further before deciding whether to accept, accept with conditions (such as additional training or coaching), or reject the application for membership.

Once notified of the outcome of the meeting, should the applicant be rejected or decide not to continue with the club their club fee will be refunded in full.

Region, County and AGB fees will not be refunded as they can be used at any other local club that the applicant may wish to join.

## What Happens Next

New members may shoot unsupervised once the Membership Secretary has confirmed in writing or by email that their application and payment has been received.

Our systems will be updated so that you receive notifications of club events, tournaments etc.

You will be given access to the Members area of our website.

You are expected to and will be called upon to assist with the running of events and tournaments, club maintenance etc.

You will have access to help you improve your shooting and to progress in the sport.

The codes to open the clubhouse and bow storage are limited to established club members. You may be granted access after you have completed 1 year with the club without incident. This means that any new archer borrowing our equipment for the first 2 months can only shoot when club members are available to give them access to the clubhouse and bow storage box, normally every Saturday and Sunday afternoon or by arrangement with another established club archer.